



# Paris Campus Guide



IT ALL STARTS HERE

BERLIN | LONDON | MADRID | PARIS | TURIN | WARSAW





# Contents

ESCP Key figures	4
Urban campuses	5
Preface	6
The spaces at the République campus	8
History of the République campus	9
Vital Roux Amphitheatre	10
Forum	11
Gelis Amphitheatre	12
Jean-Baptiste Say Room	13
Amphitheatres	14
Europe Room	15
Classrooms	16
Practical information for République	17
The spaces at the Montparnasse campus	18
History of the Montparnasse campus	19
Reception of groups	20
Atrium	21
Place des Bambous	22
Espace Moisant	23
Auditorium	24
Amphitheatres	25
Meeting room	26
Classrooms	27
Practical information for Montparnasse	28
Contacts	29

## ESCP Key figures

# 1st

Business School founded  
in the world (in 1819)

# Multi- accredited:

AACSB, EQUIS, EFMD MBA, EFMD  
EMBA, 5 European higher education  
accreditations

# A portfolio

of 45 programmes: Bachelor, MiM, MBA,  
25 Specialised Masters, 2 PhDs, EMBA,  
12 Specialised Executive Masters, Global  
Executive PhD, and a range of Executive Education  
Courses both on catalogue and on demand

More than

# 7,100

students from

# 120

nationalities

# 6

Campuses,  
in Berlin, London, Madrid,  
Paris, Turin, and Warsaw

# 160

Research professors  
of over 33 nationalities

# 140

More than  
academic partnerships  
in Europe and worldwide,  
in 47 countries

# 5,000

participants in Executive  
Education

# 65,000

alumni in more than  
150 countries worldwide



## 6 urban campuses

---

### BERLIN

The Berlin campus is located in the western part of the city centre, near Charlottenburg Palace and its beautiful gardens. Berlin is a fast-growing city with a rich economic structure and a multifaceted culture.

### LONDON:

Located in West Hampstead, North West London, this campus offers students state-of-the-art facilities in a traditional Victorian building.

### MADRID

The Madrid Campus is located in the residential area of Puerta de Hierro, 10 minutes from the city centre. Madrid is one of the most visited cities in Europe, with an exceptional living environment, rich gastronomy and thousands of places to visit. In addition, Madrid is one of the main centres of business and innovation in Europe.

### PARIS

#### République & Montparnasse

The Paris campuses are ideally located in the city centre. They are close to all the main business districts of the capital.

### TURIN

The Turin campus is located in a beautiful building with modern facilities. Turin is one of the main business centres of the Italian economy and is home to many architectural masterpieces.

### WARSAW

Our campus is based in the University of Kozminski, in the north-eastern district of Praga Północ. It is one of the oldest districts of the city.

# Preface

---

**E** [EXCELLENCE]

**S** [SINGULARITY]

**C** [CREATIVITY]

**P** [PLURALITY]

In the heart of Paris, our two Parisian sites, near Place de la République and the Montparnasse Tower, open their doors to you for organising your professional events.

Two exceptional addresses, two styles, two atmospheres and a dedicated team to accompany you, with the utmost professionalism, from the request for a quote to the closure of your event.

Contact us and we will guide you in the many ways to use our spaces to make each of your events unique.



Richard Obringer

Events &  
Catering Director







The spaces at the

→ République Campus





# History of the République campus

by Gilles Gouteux

---

Although the first ESCP classes were held in 1819 at the Hôtel des Fermes, near the rue du Louvre, the school soon moved to the Hôtel de Sully in the Marais district, before relocating again in 1830 to premises at 10, rue Neuve-Saint-Gilles, which it quickly outgrew. It then moved to 59, boulevard Saint Antoine (now boulevard Beaumarchais) in 1832.

In 1838, needing to expand further, ESCP found new premises at 102, rue Amelot, near the Cirque d'Hiver, before moving permanently to 79, Avenue de la République in 1898. This was the first urban development project in the 11th arrondissement and the City of Paris agreed to hand over 5,326 m<sup>2</sup> to the Chamber of Commerce, along with a subsidy of 600,000 francs, on the condition that the school would hold evening classes for the workers of the district.

In 1971, a new 7-storey structure was built, designed by the Swiss-born architect Leonardo Morandi.

Since its creation, the building has often been modified to adapt to changes in teaching and to keep up with new technologies. For example, in the 1970s, large lecture theatres were split up to provide smaller classrooms for interactive teaching. The school was also one of the first to install language laboratories and an indoor television network in its classrooms.

In 1905, the school created the Merchant Navy School in France to train long-distance captains in trade, which explains the presence of naval anchors on the walls of the interior façade. During the First World War, the building was requisitioned as a hospital for soldiers brought from the front by the Gare de l'Est.

The school was also home to the first branch of the Restaurants du Cœur, thanks to the presence of the son of Coluche's impresario, who convinced his friends, first year students, to help organise the comedian's appeal for aid to the poor and homeless (receiving cheques, calling transporters, booking sheds, etc.).

# Vital Roux Amphitheatre



## Description

Vital Roux Amphitheatre is one of the largest the largest venues available to rent on the République campus. With 370 seats, it is the ideal place to hold conferences or symposiums.



## Equipment

- • Projector
- • Lectern
- • Conference equipment
- • Possibility of videoconferencing
- • Sound system
- • Screens



## Cost

Half day: €3,100

Full day: €4,800



## Contact

events.republique@escp.eu



360° video and more information on <https://escp.bubble-vr.com/republique/index.htm>

# Forum



## Description

With a surface area of 430m<sup>2</sup> and natural light, the the Forum is the ideal space for concerts, exhibitions, cocktail parties or other events.



## Equipment

- • Furniture adaptable to suit your event



## Cost

Half day: €3,100

Full day: €4,600



## Contact

events.republique@escp.eu



360° video and more information on <https://escp.bubble-vr.com/republique/index.htm>

# Gelis Amphitheatre



## Description

With modern equipment and 173 seats, Gelis amphitheatre is an ideal space for holding symposiums or conferences.



## Equipment

- • Projector
- • Lectern
- • Microphones
- • Possibility of videoconferencing
- • Low stage

Gelis amphitheatre also has a reception area and integrated cloakroom.



## Cost

Half day: €3,100

Full day: €4,800



## Contact

events.republique@escp.eu



integrated cloakroom



360° video and more information on <https://escp.bubble-vr.com/republique/index.htm>

# Jean-Baptiste Say Room



## Description

The Jean-Baptiste Say Room is a modern space that is well suited to cocktail parties, buffets and networking events.



## Equipment

- • Screens
- • Coffee table
- • Armchairs
- • Bar
- • Bar stools



## Cost

Half day: €2,600

Full day: €3,600



## Contact

events.republique@escp.eu



360° video and more information on <https://escp.bubble-vr.com/republique/index.htm>

# Amphitheatres



## Description

The République campus also has several amphitheatres with a capacity of 30 to 80 seats.

These amphitheatres are perfectly suited to small and medium-sized events.



## Equipment

- • Projector
- • Computer
- • Desk
- • Possibility of videoconferencing
- • Lectern



## Cost

Half day: €750

Full day: €1,200



## Contact

events.republique@escp.eu



360° video and more information on <https://escp.bubble-vr.com/republique/index.htm>

# Europe Room



## Description

With 90 seats, the Europe Room is perfect for training courses or workshops. We also have a twin amphitheatre with a capacity of 110 seats.



## Equipment

- • Screens
- • Lectern
- • Raised stage
- • Possibility of videoconferencing
- • Projector
- • Chairs with writing tablets



## Cost

Half day: €850

Full day: €1,400



## Contact

[events.republique@escp.eu](mailto:events.republique@escp.eu)



360° video and more information on <https://escp.bubble-vr.com/republique/index.htm>

# Classrooms



## Description

The République campus has many classrooms with a capacity of 12 to 55 places suitable for holding training courses, presentations, etc.

Some of these rooms are equipped with hybrid technology, allowing live broadcasting of your events.



## Equipment

- • Projector
- • Table
- • Screen
- • Possibility of videoconferencing
- • Desk



## Cost

Half day: €450

Full day: €600



## Contact

events.republique@escp.eu



360° video and more information on <https://escp.bubble-vr.com/republique/index.htm>





# Practical information République campus

## Getting there

79 Avenue de la République, 75011 Paris



- • **Metro:** Rue Saint-Maur station (M3)
- • **Bus:** Line 96 "Saint-Maur - Jean Aicard"  
Line 71 "Père Lachaise" or "Ménilmontant"

## The campus

The République campus is open

- Monday to Friday from 7am to 10.30pm
- Saturday from 7.30 am to 7pm

## Extra info

- ➔ Cafeteria: 8am - 4.30pm
  - Breakfast
  - Coffee break
  - Lunch
- ➔ WIFI access
- ➔ Cashpoint
- ➔ Parking:
  - Effiparc Alhambra - 50 rue de Malte
  - Ledru Rollin Parking - 121 avenue Ledru Rollin
- ➔ Velib station: Guillaume Bertrand - République



## Near the campus

- **Hotel Verlain:**  
97 rue Saint Maur  
+33(0) 143574488
- **Hotel Inn Paris République:**  
10 place de la République  
+33(0) 143144350
- **Ibis Hotel:**  
80 rue de la Folie Regnault  
+33(0) 153368292



The spaces at the

→ Montparnasse campus



# History of the Montparnasse campus

by Gilles Gouteux

---

The story of the Montparnasse Campus was marked by a man who has long been forgotten: Armand Moisant, who gave his name to the street on which the Parisian site of ESCP on the left bank is located. Armand Moisant, a French engineer, builder and industrialist, made a name for himself from 1870 to 1906 in major metal construction works in France.

He was responsible for the Bon Marché department store, the Grand Palais and other works for the Paris Universal Exhibitions, the aerial metro and the Gare de Lyon in Paris, the Pont du Midi in Lyon and other civil engineering works in the colonies and throughout the world.

During these years, Armand Moisant was one of Gustave Eiffel's main competitors and, as President of the Paris Chamber of Commerce in 1900 and 1901, he donated part of the land where his company was located, between Boulevard de Vaugirard and Rue Falguière, to found the second Chamber of Commerce business school (ECCIP) in 1908, following the one on Avenue de Trudaine (9th arrondissement).

The building is the work of the architect Louis Masson-Détourbet and was added to in 1954 by another, at the corner of rue Antoine Bourdelle, built by Alexis Dresse and Léon Oudin.

In 2011, this part was replaced by a building by Mariano Efron and Martin Robain of AS Architecture Studio, who completely renovated the complex, both its exterior façade and the interior, meeting all environmental and safety standards.

**Exterior:** The architects chose to use a range of 7 colours from red to yellow, which are reminiscent of the brick walls of other buildings in the area, notably the Bourdelle Museum, which adjoins the Campus.

4,000 electrically controlled glass panels are oriented according to the sun and the seasons and provide thermal and sound insulation.

**Interior:** The developers managed to erase the differences between the old building and the new additions. To the original bricks, they adapted curved shapes and clean lines.

The building is accessible to people with disabilities.

# Reception of groups



## Description

With a surface area of 33m<sup>2</sup>, this space is dedicated to the reception of groups and can also be used as a cloakroom.



## Equipment

- • Chairs
- • Tables
- • Coat rack



## Cost

- Half day: €400
- Full day: €600



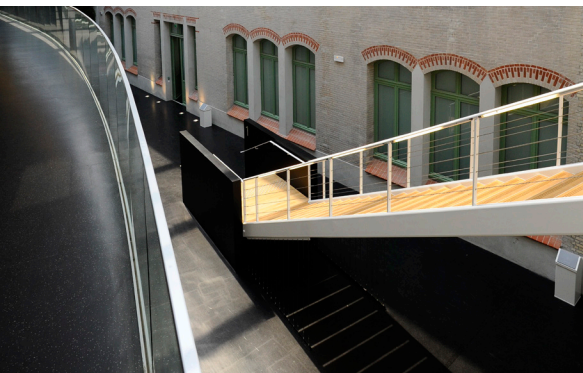
## Contact

events.montparnasse@escp.eu



360° video and more information on <https://escp.bubble-vr.com/montparnasse/index.htm>

# Atrium



## Description

The atrium is an adaptable space for cocktail parties, evening events or afternoon teas.



## Equipment

- • Adaptable furniture
- • Chairs
- • Tables
- • Screens



## Cost

Half day: €2,600

Full day: €3,600



## Contact

[events.montparnasse@escp.eu](mailto:events.montparnasse@escp.eu)



360° video and more information on <https://escp.bubble-vr.com/montparnasse/index.htm>

# Place des Bambous



## Description

With a surface area of 180m<sup>2</sup> in the heart of the campus, Place des Bambous is the perfect space for any catering/networking services.



## Equipment

- • Adaptable furniture
- • Chairs
- • Tables



## Cost

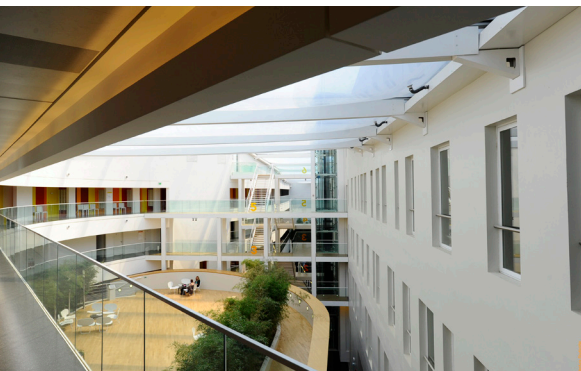
Half day: €1,800

Full day: €2,500



## Contact

[events.montparnasse@escp.eu](mailto:events.montparnasse@escp.eu)



360° video and more information on <https://escp.bubble-vr.com/montparnasse/index.htm>

# Espace Moisant



## Description

With a capacity of 80 to 120 seats and a surface area of 190m<sup>2</sup>, this is the ideal space for organising meals, cocktail parties and networking events.



## Equipment

- • Adaptable furniture
- • Chairs
- • Tables
- • Projector



## Cost

Half day: €2,600

Full day: €3,600



## Contact

[events.montparnasse@escp.eu](mailto:events.montparnasse@escp.eu)



360° video and more information on <https://escp.bubble-vr.com/montparnasse/index.htm>

# Auditorium



## Description

The auditorium is one of the largest spaces available for hire on the Montparnasse campus. With 240 seats and 217m<sup>2</sup> surface area, it is the ideal place for holding conferences or symposiums.



## Equipment

- • Projector
- • Microphones
- • Raised stage
- • Possibility of videoconferencing
- • Lectern



## Cost

Half day: €3,100

Full day: €4,800



## Contact

events.montparnasse@escp.eu



360° video and more information on <https://escp.bubble-vr.com/montparnasse/index.htm>



# Amphitheatres



## Description

The Montparnasse campus has 3 amphitheatres with 70 to 90 seats and a surface area of 98 to 144m<sup>2</sup>. These amphitheatres are perfectly suited to small and medium-sized events.



## Equipment

- • Projector
- • Microphone
- • Computer
- • Possibility of videoconferencing



## Cost

Half day: €1,000

Full day: €1,500



## Contact

events.montparnasse@escp.eu



360° video and more information on <https://escp.bubble-vr.com/montparnasse/index.htm>

# Meeting room



## Description

An oval table and 20 seats make the boardroom an ideal space for presentations or board meetings.



## Equipment

- • Projector
- • Large oval table
- • Flip-chart
- • Possibility of videoconferencing
- • Screens



## Cost

Half day: €900

Full day: €1,200



## Contact

events.montparnasse@escp.eu



360° video and more information on <https://escp.bubble-vr.com/montparnasse/index.htm>

# Classrooms



## Description

The Montparnasse campus has many classrooms suitable for holding training sessions, presentations, etc. Some of these rooms are equipped with hybrid technology allowing live broadcasting of your events.



## Equipment

- • Projector
- • Table
- • Desk
- • Possibility of videoconferencing
- • Screens



## Cost

Half day: €450

Full day: €600



## Contact

[events.montparnasse@escp.eu](mailto:events.montparnasse@escp.eu)



360° video and more information on <https://escp.bubble-vr.com/montparnasse/index.htm>



# Practical information Montparnasse campus

## Getting there

3 Rue Armand Moisant, 75015 Paris



- • Metro: Falguière (MI2),  
Montparnasse (M4/M6/MI3) exit 2 place  
Bienvenüe
- • Bus: Lines 91 / 92 / 94 / 95 / 96

## The campus

The Montparnasse campus is open

- Monday to Friday from 7am to 10.30pm
- Saturday from 7.30 am to 7pm

## Extra info

- ↻ Cafeteria: 8am - 4.30pm
  - Breakfast
  - Coffee break
  - Lunch
- ↻ WIFI access
- ↻ Cashpoint
- ↻ Parking:
  - Zenpark Necker Hospital - 6 rue Dulac
  - Yespark Falguière - 73 Villa du Mont Tonnerre
- ↻ Velib station: 26 avenue du Maine or Montparnasse



## Near the campus

- Hotel Berkeley:  
2 rue Odessa  
+33(0) 14322537
- Hotel Korner Montparnasse:  
54 rue Falguière  
+33(0) 143207070
- Ibis Hotel:  
22 avenue du Maine  
+33(0) 145489552



## Contacts

### REPUBLICQUE CAMPUS

Sandrine TARDIVEL  
Institutional Events Officer



Office 4031



+33(0) 149235809  
+33(0) 648625166



events.republique@escp.eu



### MONTPARNASSE CAMPUS

Sabrine HAKIM  
Assistant to the Director of Events, Catering  
& Student Life



Office 1166



+33(0) 149235739  
+33(0) 787747874



events.montparnasse@escp.eu







# Paris Campus Guide

ESCP has the best international accreditations.  
Our European campuses are officially recognised in their countries.



5 European Higher Ed  
accreditations

**BERLIN**  
Heubnerweg 8 - 10  
14059 Berlin, Germany

**LONDON**  
527 Finchley Road  
London NW3 7BG,  
United Kingdom

**MADRID**  
Arroyofresno 1  
28035 Madrid, Spain

**PARIS REPUBLIQUE**  
79, av. de la République  
75543 Paris Cedex 11, France

**PARIS MONTPARNASSE**  
3, rue Armand Moisant  
75015 Paris, France

**TURIN**  
Corso Unione Sovietica, 218 bis  
10134 Torino, Italy

**WARSAW**  
c/o Kozminski University  
International Relation Office  
57/59 Jagiellońska St.  
03-301 Warsaw, Poland